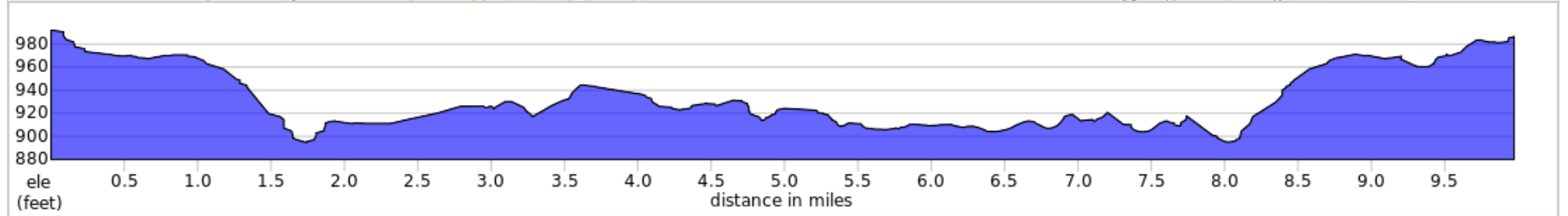
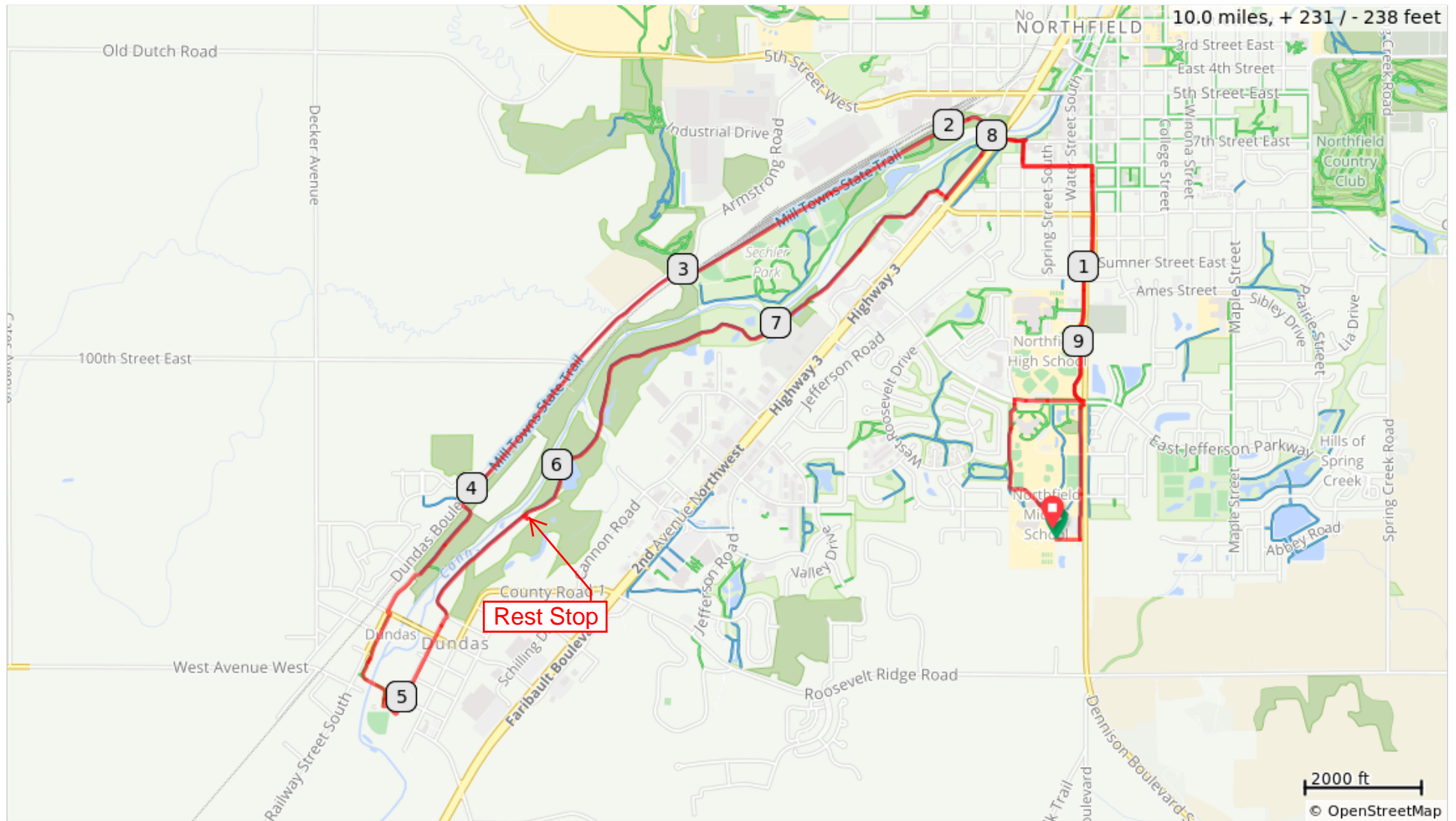


2019 JJBT "Townfolk" 10 Mile Route_v2 (Blue markings)



2019 JJBT "Townfolk" 10 Mile Route_v2 (Blue markings)

Num	Dist	Type	Note
1.	0.0	📍	Start of route
2.	0.0	←	L to exit school plaza
3.	0.1	←	L onto bike trail along west side of MN-246
4.	0.5	→	R onto sidewalk
5.	0.5	←	L to cross Jefferson Pkwy
6.	0.5	←	L onto sidewalk
7.	0.6	↗	Slight R onto bike trail
8.	0.8	↗	Slight R to continue onto sidewalk
9.	1.3	←	L onto 8th St W
10.	1.6	→	R onto bike trail at S Linden St
11.	1.7	↙	Sharp L onto Mill Towns State Bike Trail
12.	1.8	←	Continue L up trail to cross over river

1.8 miles. +2/-97 feet

Num	Dist	Type	Note
13.	1.9	↖	Slight L across road onto Mill Towns Trail
14.	3.0	→	R onto Sechler Park Access Road to cross train track
15.	3.0	←	L onto Mill Towns Trail
16.	3.7	↖	Slight L to stay on Mill Towns Trail
17.	4.1	←	L to to cross train track
18.	4.4	↑	Exit trail onto Railway St N
19.	4.5	←	L onto Hester St
20.	4.5	→	R onto bike trail
21.	4.8	←	Slight L to cross bridge over river
22.	4.9	←	L to exit Dukes Baseball Park
23.	4.9	←	L onto 1st St N

3.2 miles. +57/-50 feet

Num	Dist	Type	Note
24.	5.2	↑	Continue straight across Hester St
25.	5.3	←	L onto East Cannon River Trail
26.	5.8	→	R to trail shelter for Rest Stop
27.	5.8	→	R to exit Rest Stop
28.	7.7	→	R off trail & cross parking NE of Culver's
29.	7.7	←	L onto bike trail along NW side of MN-3
30.	8.0	↖	Slight L toward river to go under bridges
31.	8.1	↘	Sharp R continue on southbound bike trail
32.	8.2	←	L onto 8th St W
33.	8.4	→	R onto sidewalk along west side of Division St

3.5 miles. +81/-65 feet

Num	Dist	Type	Note
34.	8.9	↖	Slight L to continue on bike trail
35.	9.2	↘	Sharp R onto sidewalk
36.	9.4	↑	Continue straight to cross Raider Dr
37.	9.4	←	L to cross Jefferson Pkwy onto bike trail
38.	9.4	→	Slight R to continue on trail along west side of elementary school
39.	9.7	↖	Slight L to continue on bike trail
40.	9.9	↗	Slight R
41.	9.9	↗	Slight R onto sidewalk
42.	10.0	→	R to Middle School plaza
43.	10.0	📍	End of route

1.6 miles. +27/-12 feet